

## Powering Up

When an outage occurs, line crews work to pinpoint problems

### 1 High-Voltage Transmission Lines

Transmission towers and cables that supply power to transmission substations (and thousands of consumers) rarely fail. But when damage occurs, these facilities must be repaired before other parts of the system can operate.

### 2 Distribution Substation

Each substation serves hundreds or thousands of consumers. When a major outage occurs, line crews inspect substations to determine if problems stem from transmission lines feeding into the substation, the substation itself, or if problems exist down the line.

### 3 Main Distribution Lines

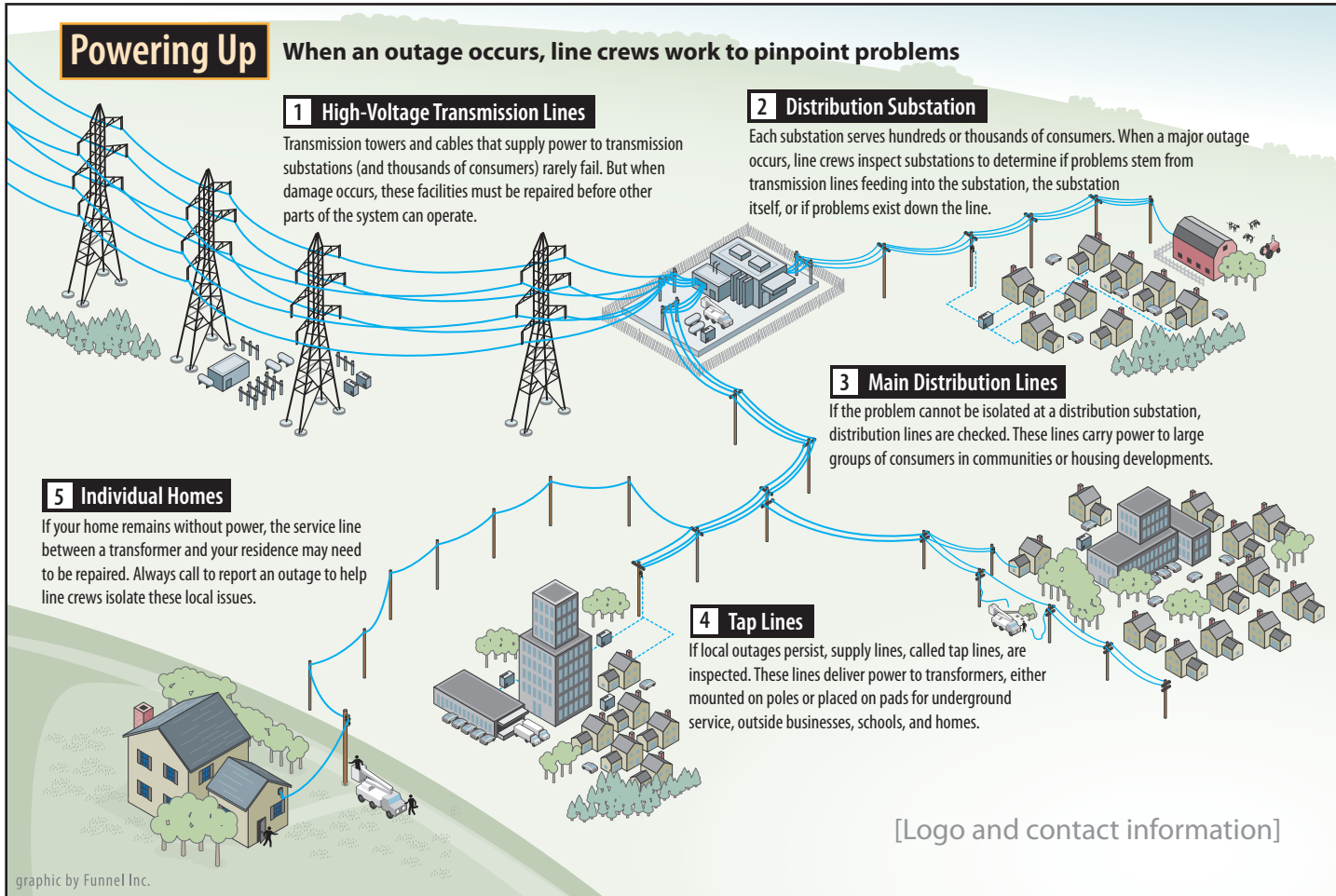
If the problem cannot be isolated at a distribution substation, distribution lines are checked. These lines carry power to large groups of consumers in communities or housing developments.

### 4 Tap Lines

If local outages persist, supply lines, called tap lines, are inspected. These lines deliver power to transformers, either mounted on poles or placed on pads for underground service, outside businesses, schools, and homes.

### 5 Individual Homes

If your home remains without power, the service line between a transformer and your residence may need to be repaired. Always call to report an outage to help line crews isolate these local issues.



graphic by Funnel Inc.

[Logo and contact information]

When electricity goes out, most of us expect power will be restored within a few hours. But when a major storm causes widespread damage, longer outages may result. Co-op line crews work long, hard hours to restore service safely to the greatest number of consumers in the shortest time possible. Here's what's going on if you find yourself in the dark.